



ANNUAL REPORT

2023-24



Table of Contents

01	Chairperson's Message	12	Health
02	RLCC Team	13	Education
03	Our Story	14	Vocational Training
04	Vision, Mission and Values	15	Livelihoods
05	Objectives	16	Partnerships
06	Organizational Structure	17	Clients
07	Investing in The future	18	Audit Report
08	Our Impact		
09	Programs		
10	Outreach		

Chairperson's Message

I am honored to share RLCC's impactful achievements over 2023-2024, reflecting our unwavering commitment to empowering women and strengthening our community despite challenging circumstances.

Our presence at 34 exhibitions drove record-breaking sales, spotlighting an inspiring collection of upcycled products crafted by 350 home-based artisans. This success is a testament to the remarkable talent of our community and the growing appreciation for sustainable craftsmanship.

In vocational training programs made a substantial impact by equipping over 380 students with critical skill development in areas aligned with local market needs. These programs empower individuals with the practical knowledge and expertise needed to pursue new economic opportunities, helping them build sustainable livelihoods.

In education, our school made significant strides, retaining 672 students and welcoming 106 new enrollments. This accomplishment underscores our dedication to providing accessible, high-quality education that fosters long-term empowerment.

Our Community Health Clinic provided essential healthcare to over 10,000 individuals this year, with extended services including vaccinations and pediatric care, enabled through strategic collaborations with local health partners.

In partnership with the Nigheban Foundation, we also supported 213 vulnerable families with critical rations, further reinforcing our commitment to community welfare.

The 2023-2024 Annual Report, highlighting these achievements and our broader impact, is available for your review. Your continued support has been instrumental in making these accomplishments possible, empowering us to create lasting, positive change for the women we serve.

Warmest regards,

Selwa Habib

Chairperson



General Body Members

- | | | |
|---------------------|--------------------------|-------------------------|
| 1. Aasma Zaidi | 13. Hira Zuberi | 26. Selwa Habib |
| 2. Abinta Zuberi | 14. Kamyla Marvi | 27. Shama Mohammad |
| 3. Ali Almani | 15. Maleeha Habib | 28. Shameem Jahangir |
| 4. Ammar Valika | 16. Mashal Farookee | 29. Shazia Zuberi |
| 5. Anushe Khuhawar | 17. Murtaza Mashooqullah | 30. Shireen Naqvi |
| 6. Aqueel Merchant | 18. Nadine Malik | 31. Sohail Habib |
| 7. Ayesha Tammy Haq | 19. Nadira Panjwani | 32. Somayeh Bardai |
| 8. Bushra Shirazi | 20. Qumail Habib | 33. Zeba Rashid Faruqui |
| 9. Dr. Tanveer | 21. Rashida Shaikh Ali | 34. Zehra Arif |
| 10. Faisal Huq | 22. Rubica Raza | 35. Zehra Gheewala |
| 11. Fatima Haider | 23. Saadiyeh Saeed | 36. Zohra Ali |
| 12. Hessam Khaleeli | 24. Sarah Faruqui | 37. Sibthain Akbar |
| | 25. Seema Jaffer | 38. Batool Akbar |

Executive Committee

- | | |
|-------------------------|------------------|
| 1. Hessam Khaleeli | 6. Sarah Faruqui |
| 2. Murtaza Mashooqullah | 7. Selwa Habib |
| 3. Nadine Malik | 8. Shazia Zuberi |
| 4. Qumail Habib | 9. Sohail Habib |
| 5. Rubica Raza | |



Our Story

When India and Pakistan got partitioned, hundreds of thousands of families migrated, leaving behind all their worldly possessions. These included landed gentry, professionals, artisans, all with no prospects of livelihood in a new land. It was the women who were impacted the most in this incredibly bloody partition. Robbed of their lives and livelihoods, their prospects were understandably bleak. Cognizant of the plight of immigrant women, Pakistan's first lady Begum Raana Liaquat started a craftsmen colony which aimed at becoming a self-sustaining community providing artisans the opportunity to use their crafts and provide their families with education and healthcare.

Raana Liaquat Craftsmen's Colony, founded by Begum Ra'ana Liaquat Ali Khan in 1947, inaugurated on 25th August 1954, is a rights based non-profit organization that caters to the holistic needs of over 20,000 beneficiaries. RLCC has evolved as a forward looking, conscientious organization registered with Voluntary Social Welfare, certified by PCP and recognized as an NPO under the Income tax Ordinance, 2001.

The women-centric programs at RLCC are strategized in consideration of community needs, government priorities, and the targets identified by United Nations' Sustainable Development Goals (SDG's) with sector focus on education, health, vocational training, community outreach, and livelihoods. The APWA RLCC Raana Liaquat Public School, built-in 1954 has been promoting access to quality education and opportunities for learning. The organization continues to strive towards its mission to facilitate improvement in the social and economic well-being of low-income communities.

**".. a rights based
non-profit
organization that
caters to the
holistic needs of
over 20,000
beneficiaries."**

Vision

To make Shah Faisal Colony a safe and clean community with financial accessibility, access to quality health and education services

Mission

To improve the financial, social, physical, and emotional health of underprivileged communities through empowering women and children with dignity and esteem

Values

RLCC draws on the values of equity, inclusivity, transparency, innovation, integrity, respect, and fulfilment. These values make the foundations of our guiding principles, which, in turn, contribute to setting standards for all organisational operations



Objectives



**To promote access to
quality education and
opportunities for
learning for all**



**To educate women and
children on social & health
issues through awareness
initiatives**

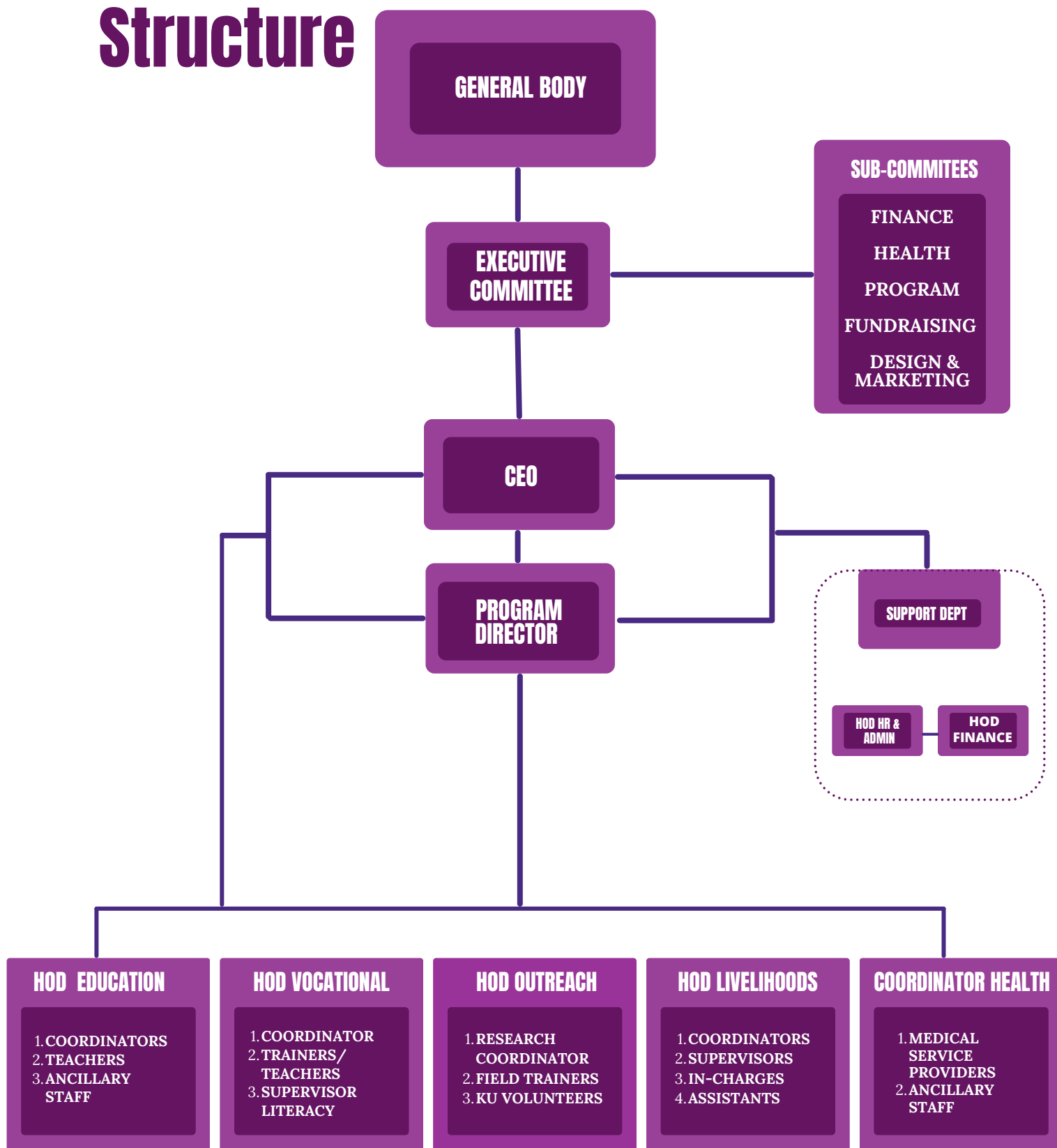


**To increase access
to, and enhance
quality health care
services**



**To increase
opportunities to
improve livelihoods and
vocational skills**

Organisational Structure



INVESTING IN THE FUTURE



SCHOOL IMPROVEMENT PLAN INITIATED

- Dr. Hira Warsi [PhD in Children Clinical Psychology from LUMS and M. Ed] joins the team as Principal.
- The school refurbishment plan finalized.
- Montessori set up initiated.
- Lesson plans & monitoring sheets implemented.
- Plan for afternoon classes initiated.
- Monthly parent meetings initiated.
- Interschool competitions initiated

Under the supervision of Mr. Sibthain Akbar

PROCUREMENTS



PROCURED BOLAN

Focus : Enhance outreach



PROCURED 8 LOOMS

Focus : Enhance production capacity



STATE OF ART COMPUTER LAB

Focus : Facilitate Hunar courses

Our Impact

Over the past 70 years, RLCC has made significant and measurable contributions to enhancing the lives of its community members. Our efforts have empowered countless women, equipping them to make informed choices about their health, education, and livelihoods. We have also fostered a strong local presence, implemented sustainable development strategies, and expanded our outreach and capacity-building initiatives to drive lasting impact.



Gender Equality



Good Health and
Well-being



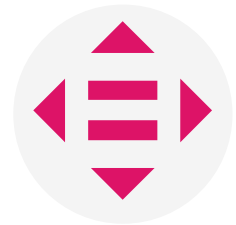
Decent Work and
Economic Growth



No Poverty



Responsible Consumption
and Production



Reduced
Inequalities



Affordable and Clean
Energy



Climate Action



Quality Education

Programs



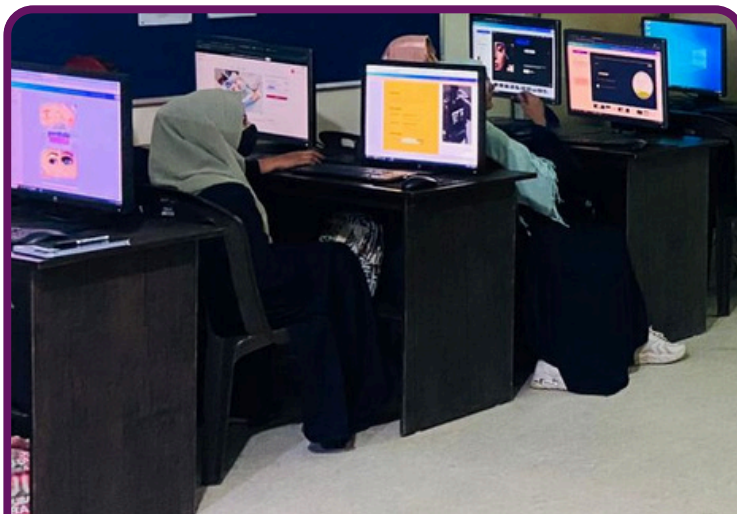
Outreach



Community Health Clinic



Raana Liaquat Public School

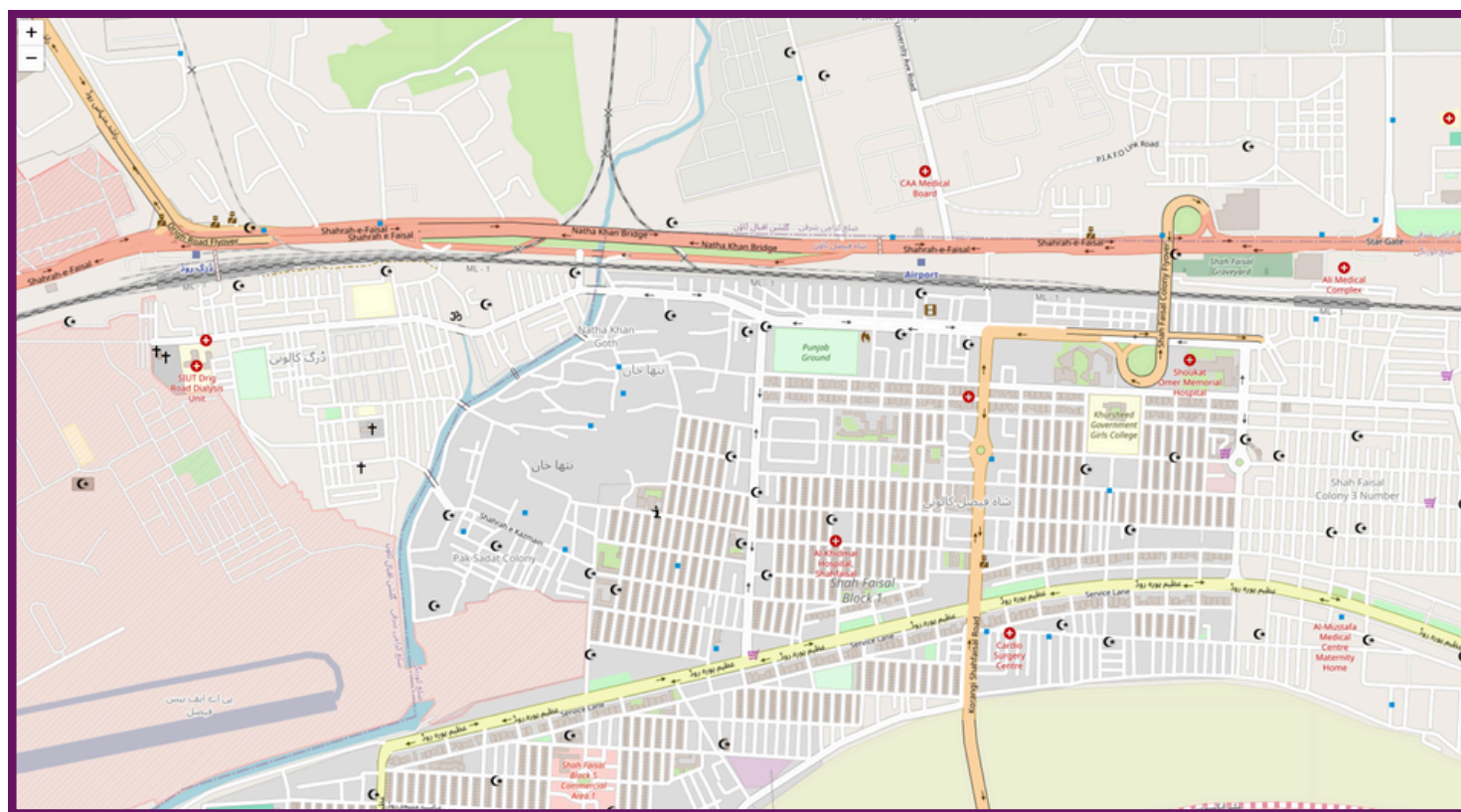


Vocational Training Centre



Livelihoods

RLCC Community Network



RLCC Focus Area : (Block 1 to 5, Natha Khan Goth, Drigh Road and Reta Plot 1 to 3)		
Particulars	Total Focus Area	Reached by RLCC (Indirect Beneficiaries not included)
Population	9,000 (7,000 women & 2,000 children)	9,500 (7,500 women & 2,000 children)
Number of Schools	116 schools	50 Schools
Colleges	4 colleges	03 Colleges
Clinics	35 clinics	25 Clinics
Community Points	N/A	30 Houses

Outreach



Outreach plays a pivotal role in RLCC's programs, enabling the organization to establish a personalized connection with its beneficiary community. Through outreach, RLCC uplifts the community by focusing on women and youth empowerment, fostering self-sustainability. This approach aims to promote inclusive and sustainable economic growth in Shah Faisal Colony.



Awareness Sessions

Beneficiaries: 7,500 women
and **2,000** children

Focus : Health, LSBE, CSA, Mental Health



Collaboration with LSU & KU

- **20** volunteers from LSU
- **13** students KU students completed social work training



Referrals - 891

- RLCC Clinic: 35,
- RLPS School 40,
- RLCC Livelihoods: 15,
- RLCC Vocational: 25,
- RLCC Medical
- Camp: 230,
- LRBT : 266,
- COL (Mental Health): 100,
- 10 Community Schools, Clinics, and Hospitals:
- CSA training provided to 170 children teachers.

Health



RLCC has developed a comprehensive health program, focused primarily on two initiatives: the Community Health Clinic and the Promotive and Preventive Health Program



Access to Affordable and Quality Healthcare

Beneficiaries :

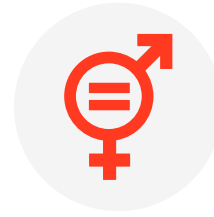
- 10,362 women & youth.
- COL – 3065 , LRBT – 2366
- General OPD (Gynae, Family Planning and General physician – 4930)



Free Medical Camps

- 12 Free medical camps with
- 1,756 beneficiaries.
- Medicines valued at approximately Rs. 87,800 donated

Ra'ana Liaquat Public School



RLCC advocates for equal access to quality education for everyone. We believe in utilizing activity-based learning to enhance conceptual understanding at Ra'ana Liaquat Public School (RLPS). RLPS remains steadfast in providing a platform for the young children of Shah Faisal Colony to realize their dreams.



Quality Education for All

Quality education provided to **676** students (**Boys: 331, Girls 345**)



Academics

- **38%** students scored Grade A & above.



Extra-curricular Activities

- Won the football tournament in Inter-school competition on 5th November, 2024 at RLPS.
- Held inter school sports week in 15th to 19th December, 2023 at RLPS.
- Held inter school Science Exhibition on 29th February, 2024 at RLPS.

Vocational Training



The Vocational Training Program operates in synergy with other departments and programs at RLCC. Its primary goal is to impart skills to women, enhancing their capabilities and providing them with employment opportunities in the market. This, in turn, enables them to better access education and health services for the benefit of their families.



Increased Access to Vocational Trainings

- Beneficiaries: 400 women
- 7 courses



Workshops

3 workshops by RS Foundation at Habitt City and Rangoonwala - 54 students attended Culinary Arts, Beauty and Personal Care, and Professional Development Classes.



Job placements

- 13% graduates gainfully employed
- 8% self employed

Livelihoods



Livelihoods concentrates on the economic empowerment and comprehensive development of female artisans through training, awareness sessions, and the revitalization of eco-friendly crafts. The emphasis is on products that are recycled, upcycled, and contribute to the preservation of traditional crafts.



Financial Empowerment

- Reached out to 300 artisans.
- 227 artisans earning regularly
- 205 ARTISANS Trained in Financial Literacy & Bank Accounts Opened



Eco-friendly Production

- Eco-friendly products 19,245
- A-grade products : 100 %
- Feedback : 96.9% Satisfied customers



Facts at a Glance

- Khaadi order completed : 6,691 items – Sales PKR.3,816,573/-
- Love RLCC exhibition: 4,334 ITEMS sold GENERATED PKR.2,031,467/-
- Student Internships : 18 HU, 15 students, 2 indus valley school, 1 mehran university

PARTNERSHIPS



CLIENTS



INDEPENDENT AUDITOR'S REPORT TO THE MEMBERS OF APWA RANA LIAQUAT CRAFTMAN'S COLONY WELFARE PROJECT

Opinion

We have audited the financial statements of APWA RANA LIAQUAT CRAFTMAN'S COLONY WELFARE PROJECT (the Welfare Project), which comprise the statement of financial position as at June 30, 2024, and the statement of income and expenditure, the statement of changes in funds, the statement of cash flows for the year then ended, and notes to the financial statements, including a material accounting policy information.

In our opinion, the accompanying financial statements present fairly, in all material respects, the financial position of the Welfare Project as at June 30, 2024 and its financial performance and its cash flows for the year then ended in accordance with accounting and reporting standards as applicable in Pakistan.

Basis for Opinion

We conducted our audit in accordance with International Standards on Auditing (ISAs) as applicable in Pakistan. Our responsibilities under those standards are further described in the Auditor's Responsibilities for the Audit of the Financial Statements section of our report. We are independent of the Welfare Project in accordance with the International Ethics Standards Board for Accountants' Code of Ethics for Professional Accountants as adopted by the Institute of Chartered Accountants of Pakistan (the Code), and we have fulfilled our other ethical responsibilities in accordance with the Code. We believe that the audit evidence we have obtained is sufficient and appropriate to provide a basis for our opinion.

Responsibilities of the management and the Managing Committee for the Financial Statements

The Management of the Welfare Project is responsible for the preparation and fair presentation of the financial statements in accordance with the approved accounting and reporting standards as applicable in Pakistan and for such internal control as the Board of Governors determine is necessary to enable the preparation of financial statements that are free from material misstatement, whether due to fraud or error.

In preparing the financial statements, the Management is responsible for assessing the Welfare Project's ability to continue as a going concern, disclosing, as applicable, matters related to going concern and using the going concern basis of accounting unless management either intends to liquidate the Welfare Project or to cease operations, or has no realistic alternative but to do so.

The Managing Committee is responsible for overseeing the Welfare Project's financial reporting process.

Auditor's Responsibilities for the Audit of the Financial Statements

Our objectives are to obtain reasonable assurance about whether the financial statements as a whole are free from material misstatement, whether due to fraud or error, and to issue an auditor's report that includes our opinion. Reasonable assurance is a high level of assurance, but is not a guarantee that an audit conducted in accordance with ISAs as applicable in Pakistan will always detect a material misstatement when it exists. Misstatements can arise from fraud or error and are considered material if, individually or in the aggregate, they could reasonably be expected to influence the economic decisions of users taken on the basis of these financial statements.

As part of an audit in accordance with ISAs as applicable in Pakistan, we exercise professional judgment and maintain professional skepticism throughout the audit. We also:

- Identify and assess the risks of material misstatement of the financial statements, whether due to fraud or error, design and perform audit procedures responsive to those risks, and obtain audit evidence that is sufficient and appropriate to provide a basis for our opinion. The risk of not detecting a material misstatement resulting from fraud is higher than for one resulting from error, as fraud may involve collusion, forgery, intentional omissions, misrepresentations, or the override of internal control.
- Obtain an understanding of internal control relevant to the audit in order to design audit procedures that are appropriate in the circumstances, but not for the purpose of expressing an opinion on the effectiveness of the Welfare Project's internal control.
- Evaluate the appropriateness of accounting policies used and the reasonableness of accounting estimates and related disclosures made by management.
- Conclude on the appropriateness of management's use of the going concern basis of accounting and, based on the audit evidence obtained, whether a material uncertainty exists related to events or conditions that may cast significant doubt on the Welfare Project's ability to continue as a going concern. If we conclude that a material uncertainty exists, we are required to draw attention in our auditor's report to the related disclosures in the financial statements or, if such disclosures are inadequate to modify our opinion. Our conclusions are based on the audit evidence obtained up to the date of our auditor's report. However, future events or conditions may cause the Welfare Project to cease to continue as a going concern.
- Evaluate the overall presentation, structure and content of the financial statements, including the disclosures, and whether the financial statements represent the underlying transactions and events in a manner that achieves fair presentation.



We communicate with those charged with governance regarding, among other matters, the planned scope and timing of the audit and significant audit findings, including any significant deficiencies in internal control that we identify during our audit.

The engagement partner on the audit resulting in this independent auditor's report is Zulfikar Ali Causer.

KARACHI

DATED: 26 NOV 2024

UDIN: AR20241006782fx3UeGI

BDO EBRAHIM & CO
CHARTERED ACCOUNTANTS



RLCC

Empowering Women

Ra'ana Liaquat Craftsmen's Colony

HEALTH . EDUCATION . VOCATIONAL . LIVELIHOODS . OUTREACH