



RLCC

Empowering Women
Ra'ana Liaquat Craftsmen's Colony
Health Centre / Education / Training



2020-21 | ANNUAL REPORT

PREPARED BY

Ra'ana Liaquat Craftsmen's Colony Welfare Project

Table of Contents

| | | | |
|----|----------------------------|----|----------------|
| 01 | Chairperson's Message | 10 | Programs |
| 02 | RLCC Team | 11 | Health |
| 03 | Our Story | 12 | Vocational |
| 04 | Mission, Vision and Values | 13 | Livelihoods |
| 05 | Objectives | 14 | Outreach |
| 06 | Our Success | 15 | Education |
| 07 | Organizational Structure | 16 | Zakat |
| 08 | Achievements | 17 | Collaborations |
| 09 | Our Impact | 18 | Audit Report |



RLCC ANNUAL REPORT 2020-21

2020 began as one of our strongest years, with planned initiatives to improve our healthcare services, strengthen our vocational services, enhance our livelihoods program and further our mission to provide quality education. However, a few months after, COVID-19 upended most of our plans. What started as an acute health crisis quickly permeated all facets of life, with far-reaching social and economic consequences. Hard-earned gains in all spheres of development—not just global health, but also economic growth, education, and poverty alleviation—stalled or regressed.

Despite the challenges of the pandemic, RLCC continued to strive and thrive towards its mission of holistically empowering women. RLCC broke all previous sale records through 10 exhibitions and 2 new stores to place upcycled and handmade products made by 202 artisans. We initiated loom training for artisans and began production of new loom products.

Our Ra'ana Liaquat Public school retained enrollment and parent engagement through online classes and enrolled 94 new students.

The RLCC Community Health Clinic provided affordable services to 8,428 beneficiaries through a collaboration with LRBT eye clinic and a satellite clinic in the underprivileged area of Natha Khan Goth.

With the help of Robin Hood Army, RLCC provided ration to 620 families. Further, with the help of Government of Sindh, we vaccinated 315 community members in Shah Faisal Town.

RLCC also prides itself in its dedication to sustainable waste management practices. Our collaboration with GarbageCAN allowed us to efficiently utilize our waste while remaining materials were upcycled into handmade products. Lastly, the newly inaugurated RLCC Bhajitable Garden is an environmental space for women to organically grow and pick vegetables for their family's consumption.

RLCC is dedicated to its mission envisioned by Begum Raana Liaquat Ali Khan and committed to accountability and transparency of the financial resources entrusted to us.

I am pleased to share with you Ra'ana Liaquat Craftsmen's Colony Welfare Project's Annual Report 2020 – 21. This commitment is essential to measure the impact we work towards.

To you all, I am grateful for your continued support.

Selwa Habib

CHAIRPERSON



General Body Members

| | | |
|--------------------|------------------|--------------------|
| Nadra Panjwani | Shameem Jahangir | Ali Almani |
| Qumail Habib | Shazia Zuberi | Aasma Zaidi |
| Rubica Raza | Shireen Naqvi | Dr. Bushra Shirazi |
| Rashida Shaikh Ali | Sohail Habib | Dr. Tanveer |
| Saadiyeh Saeed | Somayeh Bardai | Faisal Huq |
| Sarah Faruqui | Nadine Malik | Fatima Haider |
| Seema Jaffer | Zehra Gheewala | Hessam Khaleeli |
| Shala Shareef | Zahra Arif | Kamyla Marvi |
| Selwa Habib | | Mashal Farookee |

Executive Committee Members

| | |
|-----------------|---------------|
| Kamyla Marvi | Qumail Habib |
| Seema Jaffer | Selwa Habib |
| Mashal Farookee | Shazia Zuberi |
| Hessam Khaleeli | Fatima Haider |
| Sarah Faruqui | |



Our Story

When India and Pakistan got partitioned, hundreds of thousands of families migrated, leaving behind all their worldly possessions. These included landed gentry, professionals, artisans, all with no prospects of livelihood in a new land. It was the women who were impacted the most in this incredibly bloody partition. Robbed of their lives and livelihoods, their prospects were understandably bleak. Cognizant of the plight of immigrant women, Pakistan's first lady Begum Raana Liaquat started a craftsmen colony which aimed at becoming a self-sustaining community providing artisans the opportunity to use their crafts and provide their families with education and healthcare.

Raana Liaquat Craftsmen's Colony, founded by Begum Ra'ana Liaquat Ali Khan in 1947, inaugurated on 25th August 1954, is a rights based non-profit organization that caters to the holistic needs of over 20,000 beneficiaries. RLCC has evolved as a forward looking, conscientious organization registered with Voluntary Social Welfare, certified by PCP and recognized as an NPO under the Income tax Ordinance, 2001.

The women-centric programs at RLCC are strategized in consideration of community needs, government priorities, and the targets identified by United Nations' Sustainable Development Goals (SDG's) with sector focus on education, health, vocational training, community outreach, and livelihoods. The APWA RLCC Raana Liaquat Public School, built-in 1954 has been promoting access to quality education and opportunities for learning. The organization continues to strive towards its mission to facilitate improvement in the social and economic well-being of low-income communities.

**".. a rights based
non-profit
organization that
caters to the
holistic needs of
over 20,000
beneficiaries."**

Mission

To improve the financial, social, physical, and emotional health of underprivileged communities through empowering women and children with dignity and esteem

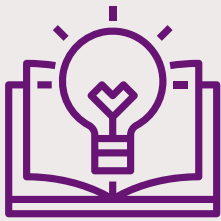
Vision

To make Shah Faisal Colony a safe and clean community with financial accessibility, access to quality health and education services

Values

RLCC draws on the values of equity, inclusivity, transparency, innovation, integrity, respect, and fulfilment. These values make the foundations of our guiding principles, which, in turn, contribute to setting standards for all organisational operations

Objectives



**To promote access to
quality education and
opportunities for
learning for all**



**To educate women and
children on social & health
issues through awareness
initiatives**



**To increase access
to, and enhance
quality health care
services**



**To increase
opportunities to
improve livelihoods and
vocational skills**

Our Success



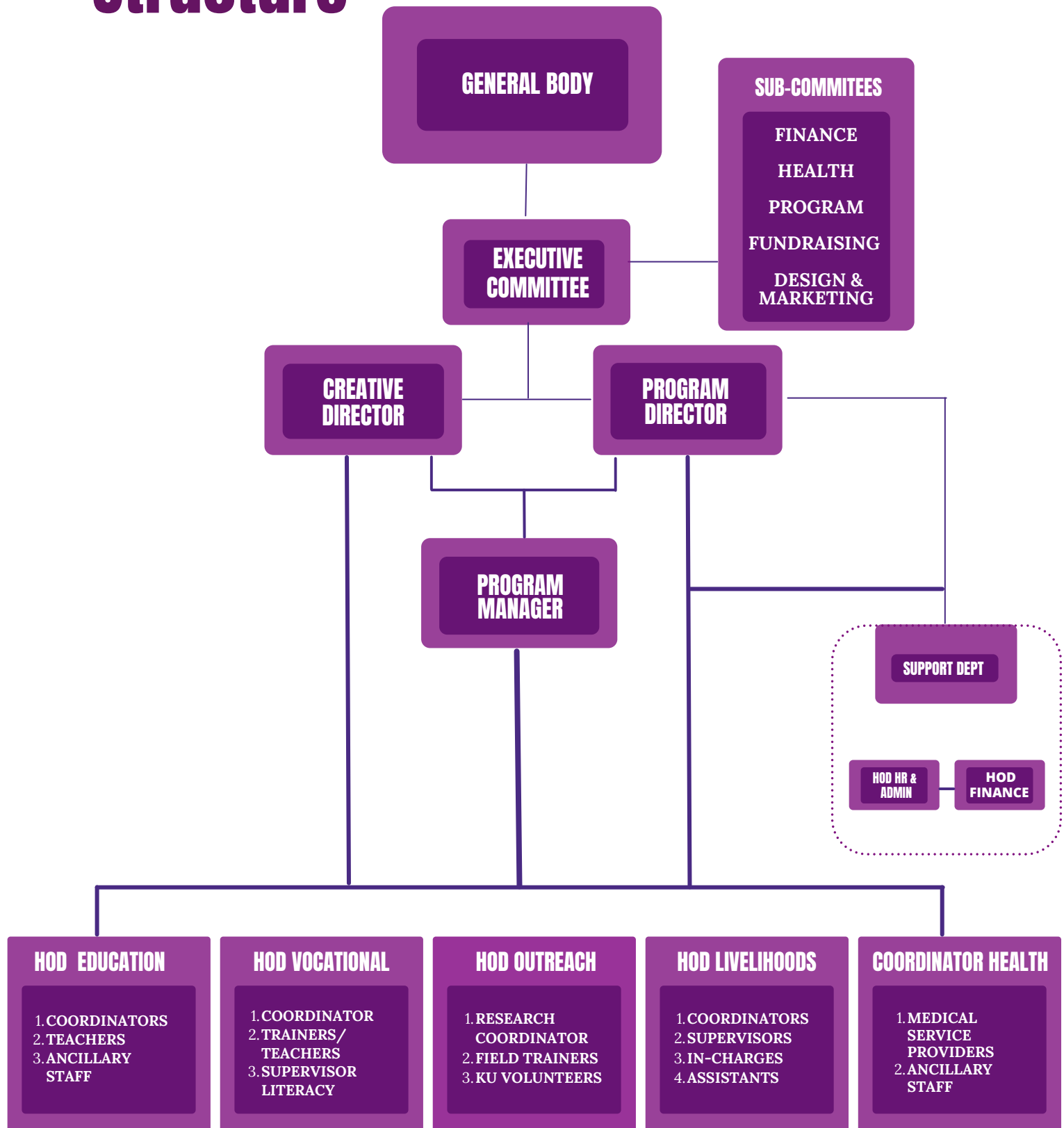
I joined RLCC in 2015 and I have been here for 7 years now. Before RLCC, I was a housewife and never thought I would be running my own café one day. I along with my husband who also works as groundskeeper and guard at RLCC, support our five children. We work hard to give our children a lifestyle and education that was never afforded to us. I don't have to borrow money from anyone and can manage my expenses, run a home, and put food on the table for my family every day. RLCC has completely changed my life and helped me evolve into a strong and independent woman.



I have met different people from all walks of life with numerous achievements and talents. I first visited RLCC for their education program and slowly got interested in their crafts and skill development area. I worked as an artisan for one year before becoming an employee and running my own canteen. I have been providing staff members and visiting guests lunch for the last 6 years. My dream is to run a catering business and become a chef on a larger platform one day.

LUBNA

Organisational Structure



Achievements

The need for a holistic community that supports the economic and social wellbeing of its inhabitants remains as relevant today as it was in 1947. Pakistan is marred with deep inequality and swathes of the population lack access to the most basic amenities, including education, healthcare and economic opportunity. RLCC strives to address this inequality in its target community, Shah Faisal Colony, and other underprivileged areas of Pakistan, by fulfilling its mandate to improve women's lives by alleviating poverty, building capacity, enabling women to exercise agency in decision making and furthering the United Nations Sustainable Development Goals.



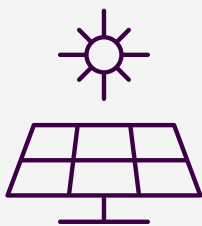
Increasing beneficiaries

RLCC continues to empower individuals in different capacities. A footfall of around **1000** beneficiaries per day.



Satellite Clinic in Natha Khan Goth - Primary Healthcare Services

Approximately **150** families (monthly) have access to affordable healthcare



Solar panel Donation for Raana Liaquat Public School

RLPS operates on renewable energy from solar panels donated by the Rotary Club of Karachi Metropolitan



Sustainable Waste Management Practices - Collaboration with GarbageCAN

RLCC hands over all unusable waste to GarbageCAN who then recycles it through composting

Our Impact

In its 65 years of operation, RLCC has had a direct and tangible impact on its beneficiary community. We have empowered thousands of women who are now better able to make critical decisions regarding matters of **health**, **education** and their **livelihoods**. We have also developed a strong local presence, a sustainable development strategy and have furthered our **outreach** and capacity building strategy.



Gender Equality



Good Health and Well-being



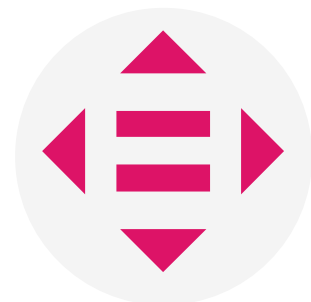
Decent Work and Economic Growth



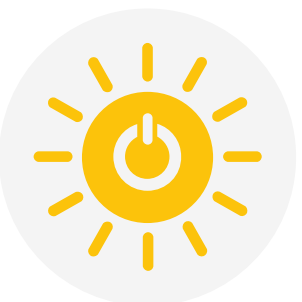
No Poverty



Responsible Consumption and Production



Reduced Inequalities



Affordable and Clean Energy



Climate Action



Quality Education

Programs



RLCC Community Health Clinic



Vocational Training Centre



Livelihoods



Outreach



Raana Liaquat Public School

Health

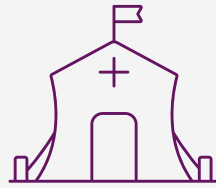


RLCC has built up a multi-faceted health program, which revolves primarily round two initiatives: the Community Health Clinic and the Promotive and Preventive Health Program.



Access to Affordable and Quality Healthcare

Quality health care education & treatment provided to **8,428** women and young people



Free Medical Camps

Free medical camps facilitated around **1000** beneficiaries



School Health Program

The health program catered to around **150** students



Vocational



The Vocational Training Program has a symbiotic relationship with RLCC's other departments and programs. The program aims to provide skills to women that will enhance their capabilities and provide them with employment opportunities, in the market to help them better avail the education and health services available for their families.



Increased Access to Vocational Trainings

200 women provided quality vocational training & 30% graduates gainfully employed



Establishing Linkages

Number of trips were arranged for students. Around 30 students from the cutting and sewing class visited Sana Safinaz



Facilitating Mothers

Day care facility with a safe environment and engaging activities for children



Livelihoods



Livelihoods focuses on economic empowerment & holistic development of female artisan by training, awareness sessions and revival of craft that is eco-friendly with focus on recycled / upcycled and craft preservation products.



Financial Empowerment

Livelihoods program financially empowering **380** artisans



Eco-friendly Production

Ensured eco-friendly production practices and raised the standard of living of artisans



Safe Working Environment

Women are provided with a safe space where they can develop new craft skills, work and earn an income for their families.



Outreach



Outreach is an integral component of RLCC's programs as it allows RLCC to maintain a personalized relationship with its recipient community. Outreach uplifts the community through women & youth empowerment and also encourage self-sustainability. This is to further promote inclusive and sustainable economic growth in Shah Faisal Colony.



Awareness Sessions

Educated **3,015** women and children on health and social issues through awareness sessions to improve emotional health and well-being



Women's Week

First time celebrated women's week in March 2021.



Green Initiatives

Bhajitable and green and clean Shah Faisal initiatives with **Garbage Can** and **Tofiq Pasha**



Education



RLCC believes in equal access to quality education for all. We believe the best way to clear concepts is through activity based learning in Ra'ana Liaquat Public School (RLPS). RLPS continue to provide young children of Shah Faisal colony a platform to make their dreams come true.



Quality Education for All

Quality education provided to around **500 students** of Ra'ana Liaquat Public School



Outshining Students

Annual result of Sindh Secondary Certification (SSC) 2020-21 - Around **70%** students scored an A+ or an A

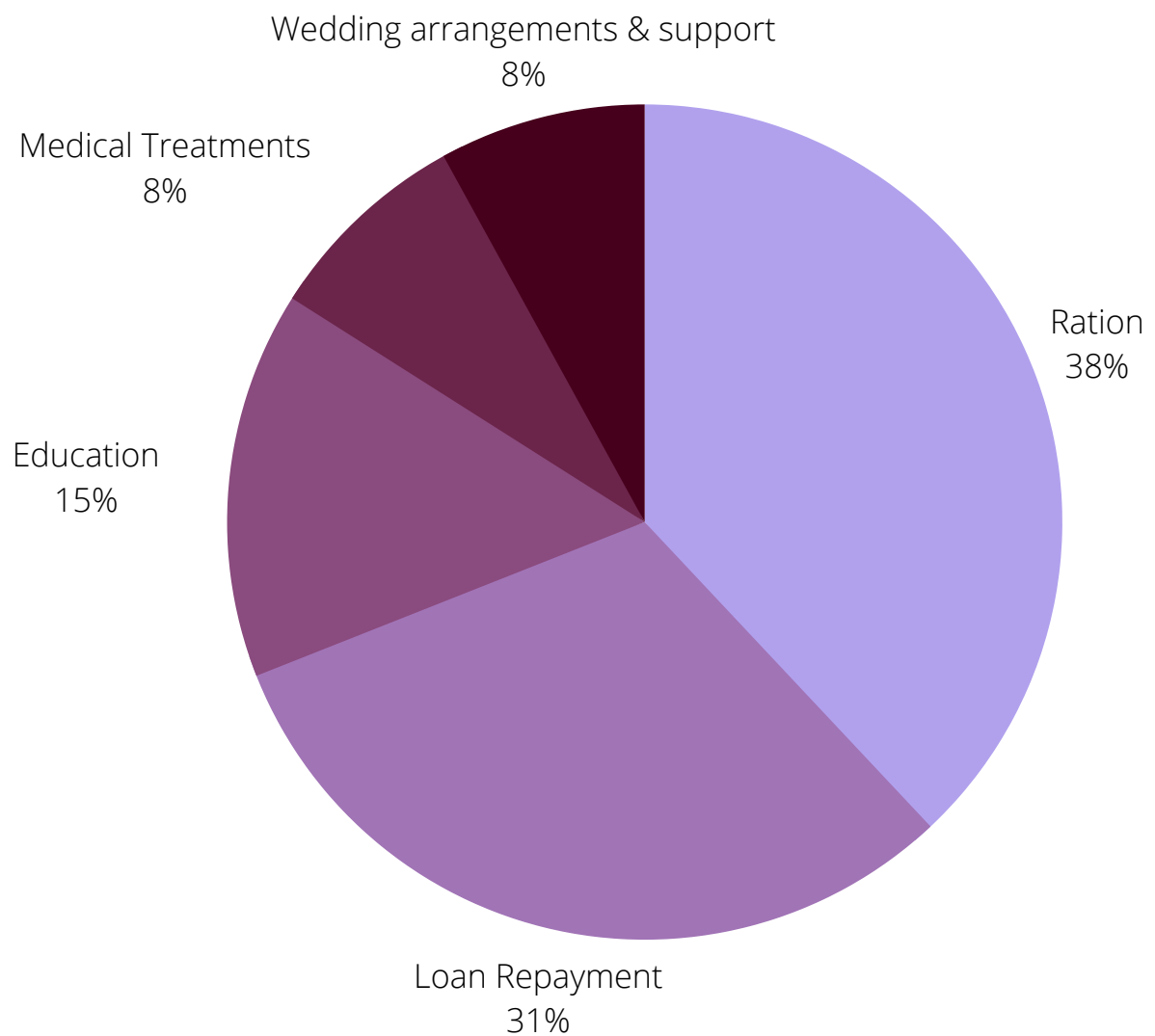


Extra-curricular Activities

Students took part in a number of extra-curricular activities such as workshops on good citizenship and capacity building.



Zakat



RLCC spends Zakat under the following categories only:

- Al-Fuqara' (The poor)
- Al-Masakin (The needy)
- Al-Amilina Alayha (Administrators of Zakat)

Any other Shariah compliant nexus.

COLLABORATIONS (existing & continued)



INDEPENDENT AUDITOR'S REPORT

To the members of APWA Rana Liaquat Craftman's Colony Welfare Project

REPORT ON THE AUDIT OF FINANCIAL STATEMENTS

Opinion

We have audited the accompanying financial statements of **APWA Rana Liaquat Craftman's Colony Welfare Project (the Welfare Project)**, which comprise of the balance sheet as at **30 June 2021**, and the income and expenditure account, the statement of changes in fund and the cash flow statement for the year then ended, and notes to the financial statements, including a summary of significant accounting policies.

In our opinion, the financial statements give a true and fair view of the financial position of the Welfare Project as at **30 June 2021**, and of its financial performance and its cash flows for the year then ended in accordance with the approved accounting standard as applicable in Pakistan.

Basis for Opinion

We conducted our audit in accordance with the International Standards on Auditing (ISAs) as applicable in Pakistan. Our responsibilities under those standards are further described in the Auditor's Responsibilities for the Audit of the Financial Statements section of our report. We are independent of the Welfare Project in accordance with the International Ethics Standards Board for Accountants' Code of Ethics for Professional Accountants as adopted by the Institute of Chartered Accountants of Pakistan (the Code), and we have fulfilled our other ethical responsibilities in accordance with the Code. We believe that the audit evidence we have obtained is sufficient and appropriate to provide a basis for our opinion.

Responsibilities of Management and Those Charged with Governance for the Financial Statements

Management of the Welfare Project is responsible for the preparation and fair presentation of these financial statements in accordance with the approved accounting standard as applicable in Pakistan, and for such internal controls as the Management determines is necessary to enable the preparation of financial statements that are free from material misstatements, whether due to fraud or error.

In preparing the financial statements, Management is responsible for assessing the Welfare Project's ability to continue as a going concern, disclosing, as applicable, matters related to going concern and using the going concern basis of accounting unless management either intends to liquidate the Welfare Project or to cease operations, or has no realistic alternative but to do so.

Those charged with governance are responsible for overseeing the Welfare Project's financial reporting process.

Auditor's Responsibilities for the Audit of the Financial Statements

Our objectives are to obtain reasonable assurance about whether the financial statements as a whole are free from material misstatement, whether due to fraud or error, and to issue an auditor's report that includes our opinion. Reasonable assurance is a high level of assurance, but is not a guarantee that an audit conducted in accordance with ISAs as applicable in Pakistan will always detect a material misstatement when it exists. Misstatements can arise from fraud or error and are considered material if, individually or in the aggregate, they could reasonably be expected to influence the economic decisions of users taken on the basis of these financial statements.



-: 2 :-

As part of an audit in accordance with ISAs as applicable in Pakistan, we exercise professional judgment and maintain professional skepticism throughout the audit. We also:

- Identify and assess the risks of material misstatement of the financial statements, whether due to fraud or error, design and perform audit procedures responsive to those risks, and obtain audit evidence that is sufficient and appropriate to provide a basis for our opinion. The risk of not detecting a material misstatement resulting from fraud is higher than for one resulting from error, as fraud may involve collusion, forgery, intentional omissions, misrepresentations, or the override of internal control.
- Obtain an understanding of internal control relevant to the audit in order to design audit procedures that are appropriate in the circumstances, but not for the purpose of expressing an opinion on the effectiveness of the Welfare Project's internal control.
- Evaluate the appropriateness of accounting policies used and the reasonableness of accounting estimates and related disclosures made by management.
- Conclude on the appropriateness of management's use of the going concern basis of accounting and, based on the audit evidence obtained, whether a material uncertainty exists related to events or conditions that may cast significant doubt on the Welfare Project's ability to continue as a going concern. If we conclude that a material uncertainty exists, we are required to draw attention in our auditor's report to the related disclosures in the financial statements or, if such disclosures are inadequate, to modify our opinion. Our conclusions are based on the audit evidence obtained up to the date of our auditor's report. However, future events or conditions may cause the Welfare Project's to cease to continue as a going concern.
- Evaluate the overall presentation, structure and content of the financial statements, including the disclosures, and whether the financial statements represent the underlying transactions and events in a manner that achieves fair presentation.

We communicate with those charged with governance regarding, among other matters, the planned scope and timing of the audit and significant audit findings, including any significant deficiencies in internal control that we identify during our audit.



Chartered Accountants

Engagement Partner: Arslan Khalid

Date: 01 November 2021

Karachi



RLCC

Empowering Women

Ra'ana Liaquat Craftsmen's Colony
Health Centre / Education / Training